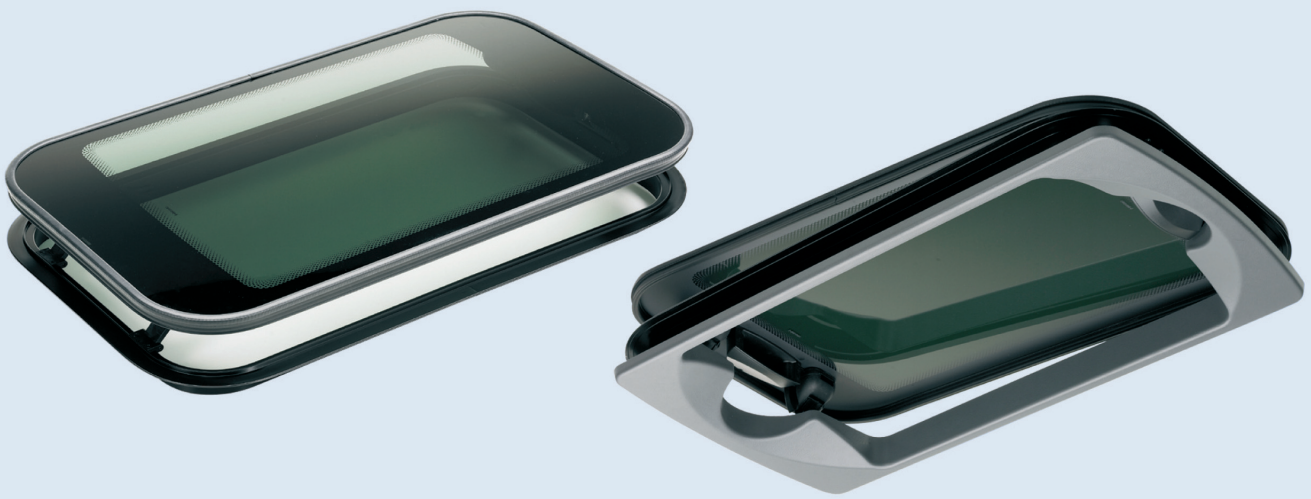


▶ VISION



Hatches / Fans

Safety and Comfort by Spheros

The Glass Hatch Vision is designed to give the manufacturer and the operator all possible advantages available in a Glass Hatch. Vision is a very attractive looking hatch with features that are by far more enhanced than the existing products on the market.

The mounting of the hatch is fast and easy and ensures best fitting from a radius of 6000 to infinity thanks to a curvature of 8000 of the dark tinted glass and the outer aluminum frame. In addition, the glass hatch Vision is only 25 mm high from the roof surface when closed and the manual hatch weighs only 12.3 kg.

When placing an order, please remember to state the radius (R) and thickness (T) of the roof because the units are manufactured according to these measurements in order to ensure a precise fitting.

Technical data:

- Size: 615 x 1035 mm
- Cut out size: 530 x 970 mm +2 (Standard size) (R=80±15 in cut out corner)
- Height from bus roof when closed: 25 mm
- Height of ventilation opening: 80 mm
- Glass thickness 4 mm
- Heat filtering 88 % (wavelength 715-2500 nm) (Dark Glass)
- Visible light filtering 65 % (Dark Glass)
- Mass: 12.3 kg (manual version)
- Mass: 14.0 kg (electric version)

Optional features:

- Manual and electric versions with emergency release mechanisms that can be released without breaking the glass dome and thus no hammer is needed
- Emergency Exit only version
- Electric version
- Interior cover plate of the dome

Several technical as well as design aspects have directed the way of designing the Vision; on the contrary to a flat glass the 8000 radius of the glass makes it very strong and eliminates the vibration – not to mention the more professional look it gives. The new unique patented HMM-mechanism makes self openings in tunnels and in extreme windy conditions very difficult. It demands considerably more operational power to open than to close. The ventilation opening of 80 mm is far more than what traditional hatches offer. In addition to this, the mechanisms are attached to the Glass Dome with a special glued metal adapter to make changing of the parts and glass easiest possible. No special tooling is needed for the replacement of the components nor is there any risk of leakage because of no holes in the dome. In addition, the operation can be carried out from inside the bus.

Novelties

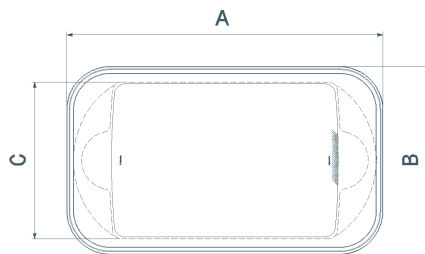
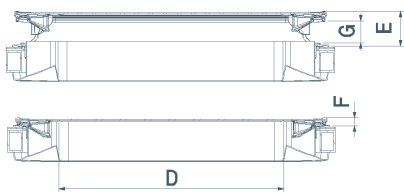
No hammers – The Vision Hatch is the first of its kind to introduce an integrated emergency solution for a Glass Hatch. As an add-on the product can be purchased with an internal integrated emergency exit solution making emergency hammers useless. Releasing the mechanism does not break the glass.

Glass Hatch Vision conforms to the 2001/85EC safety standards.

Highlights:

- No holes in Glass Dome
- Curved glass preventing vibration
- Integrated seal and glass edge protection
- Velcro fitted thermoformed ABS inner frame
- Bondable Aluminum R 8000 outer frame
- New patented manual mechanisms with opening of 80 mm
- Glass Dome exchangeable without special tools
- Conforms to 2001/85EC and EC95/28
- Available in two interior colors: Light Grey (RAL 7042) and Dark Grey (RAL 7011)

Dimensions:



Technical specifications:	Dimensions of Roof opening (mm)	A Length of dome	B Width of dome	C Inner width	D Inner length	E Height (open)	F Height (closed)	G Opening
VISION	530 x 970	1035	615	512	733	112	25	80

9/2011 • Due to continuous product development, we reserve the right to make changes without prior notice.